

OPTION ONE

Through the Internet Explorer Address Bar

NOTE: If Internet Explorer recognizes a webpage that is not compatible, you will see the Compatibility View icon button on the Address bar.

1. To Turn On Compatibility View for a Website in Internet Explorer

A) Click/tap on the unhighlighted Compatibility View icon button. (See screenshot below)

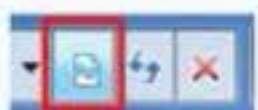
NOTE: The webpage will now reload with Compatibility View turned on for it, and the website will be added to the list in compatibility view settings (Option Three below).



2. To Turn Off Compatibility View for a Website in Internet Explorer

A) Click/tap on the highlighted (blue) Compatibility View icon button. (See screenshot below)

NOTE: The webpage will now reload with Compatibility View turned off for it, and the website will be removed from the list in compatibility view settings (Option Three below).



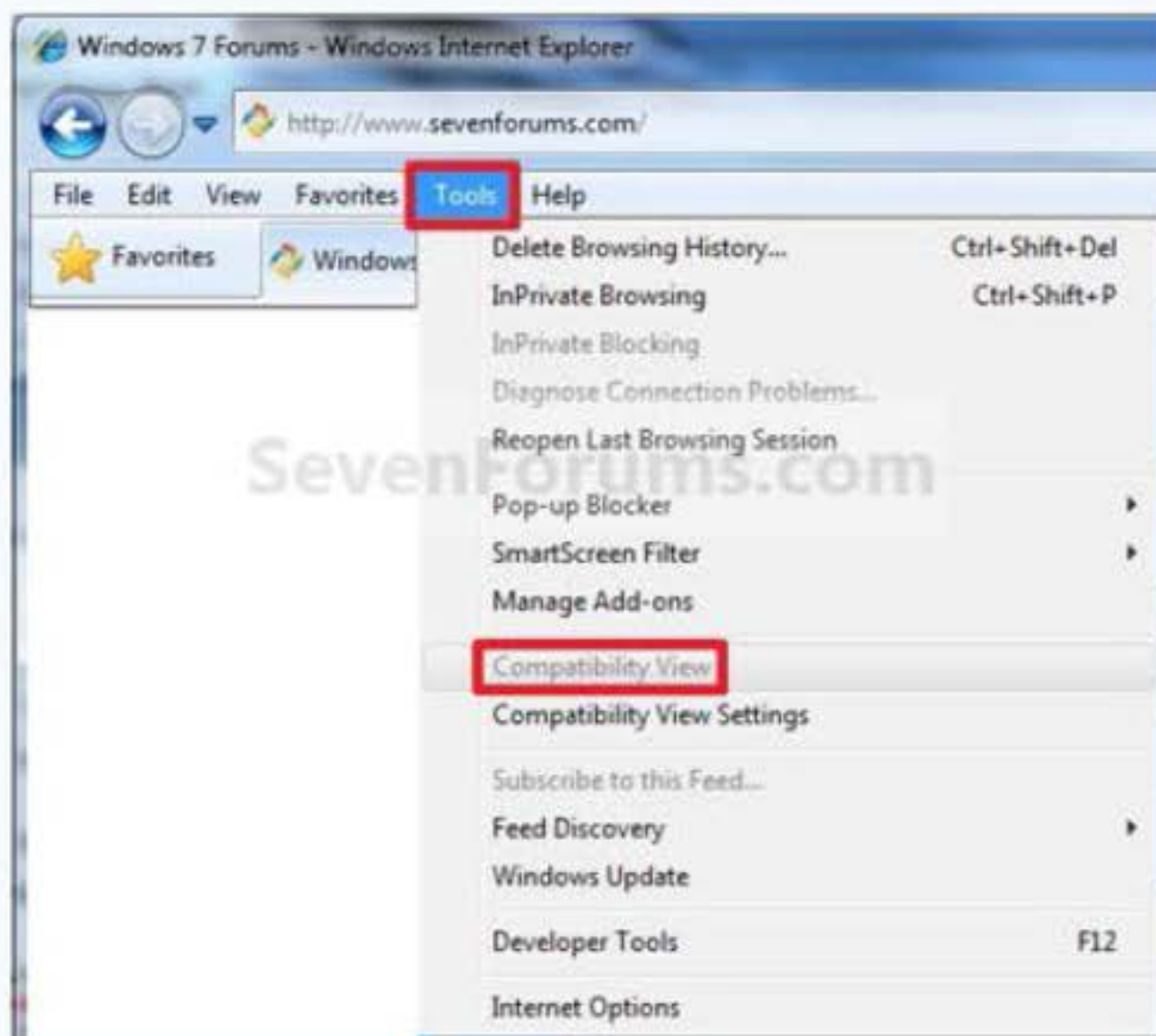
OPTION TWO

Through the Tools Menu

NOTE: This will let you turn on or off Compatibility View for the current webpage.

1. Click/tap on the **Tools Menu Bar** (ALT+T) item. (See screenshot below)

NOTE: If **Compatibility View** is grayed out, then the webpage has no compatibility issues and does not need to have Compatibility View turned on for it. You can still use **METHOD THREE** below to turn on Compatibility View for it though if you like.

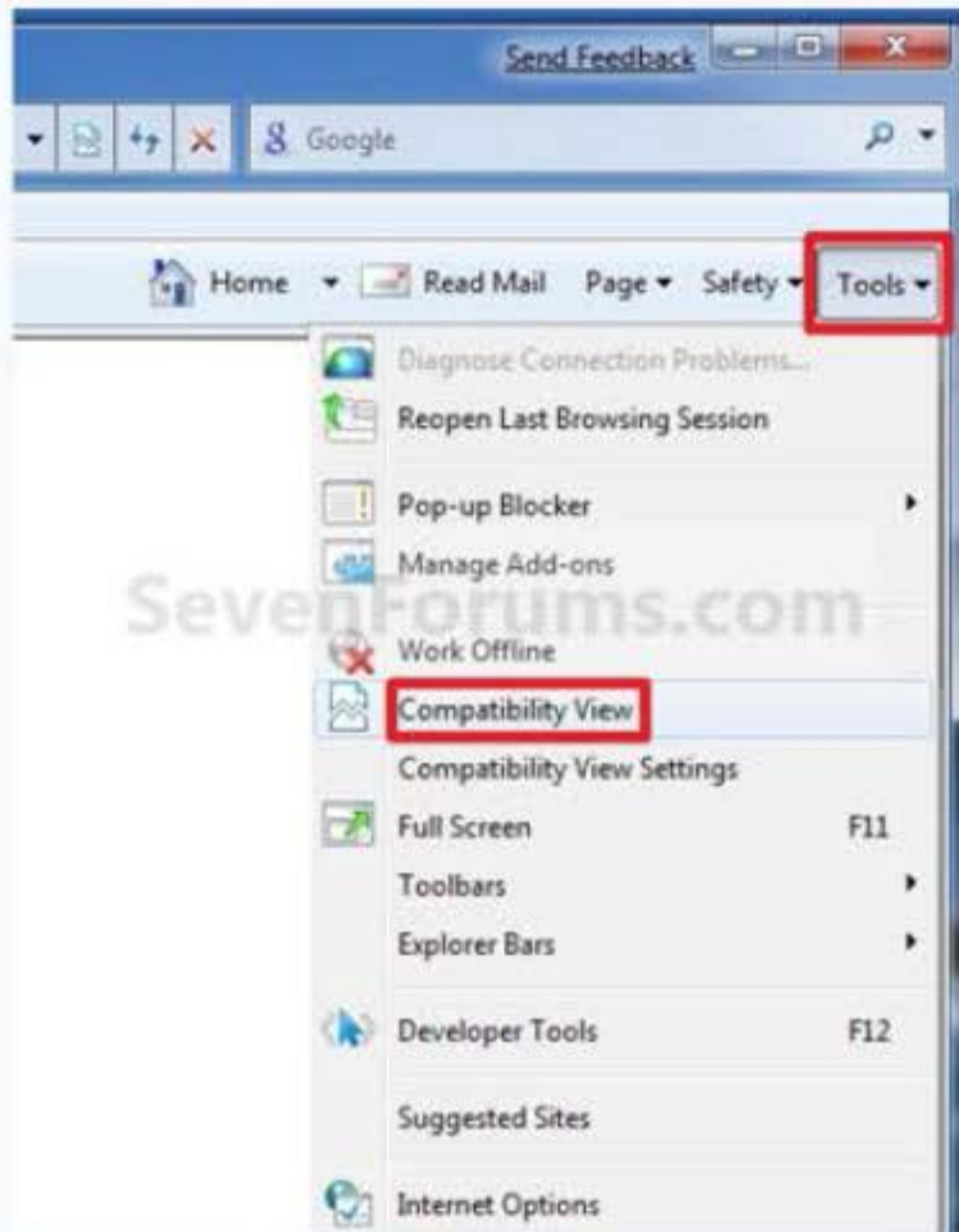


A) Go to step 3.

OR

2. Click/tap on the **Tools Command Bar** button. (See screenshot below)

NOTE: If **Compatibily View** is grayed out, then the webpage has no compatibility issues and does not need to have Compatibility View turned on for it. You can still use **METHOD THREE** below to turn on Compatibility View for it though if you like.



3. To Turn On Compatibily View for a Website in Internet Explorer

A) Click/tap on **Compatibily View** to check it. (See screenshots above)

NOTE: The webpage will now reload with Compatibility View turned on for it, and the website will be added to the list in compatibility view settings (Option Three below).

4. To Turn Off Compatibily View for a Website in Internet Explorer

A) Click/tap on **Compatibily View** to uncheck it. (See screenshots above)

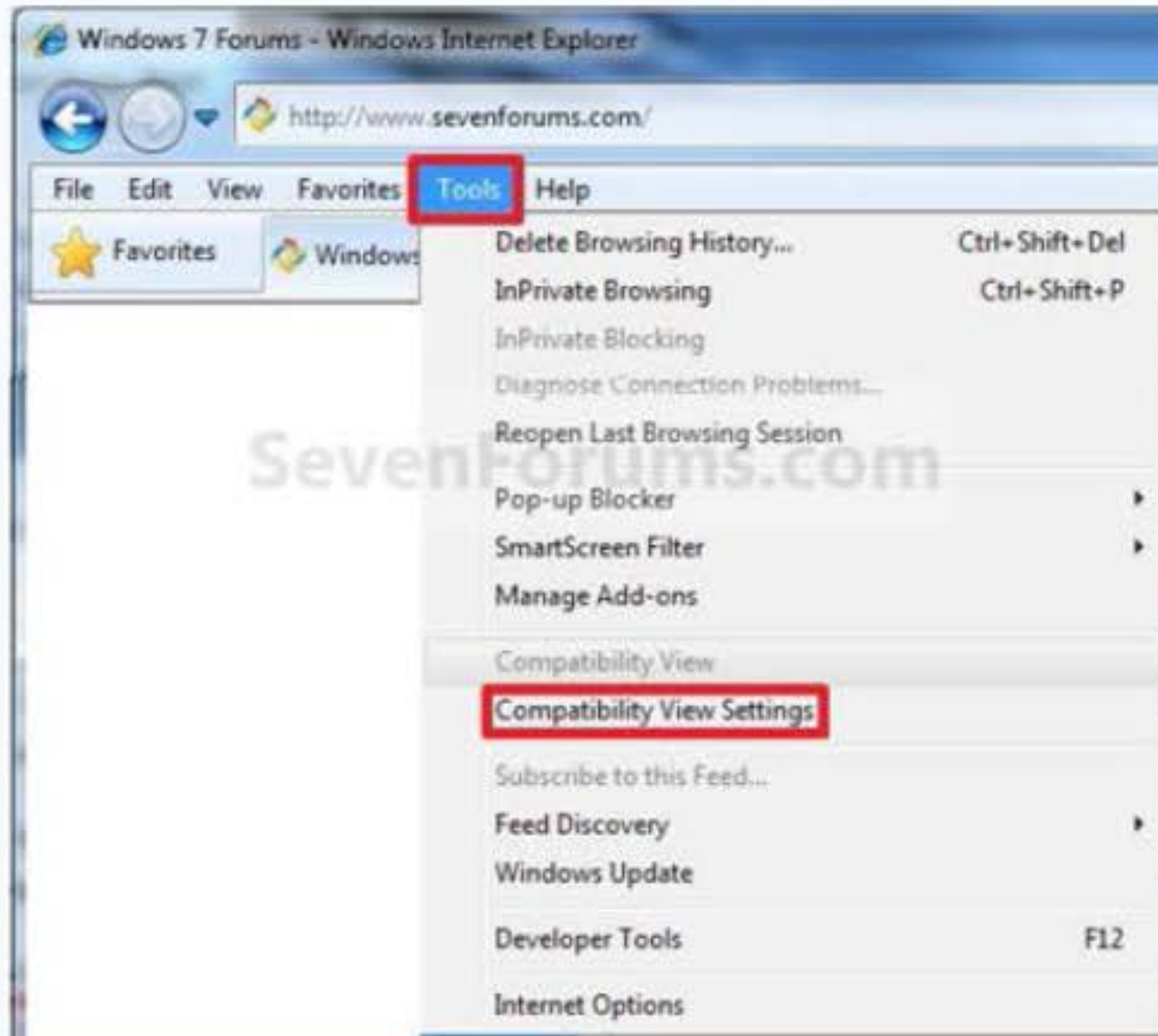
NOTE: The webpage will now reload with Compatibility View turned off for it, and the website will be removed from the list in compatibility view settings (Option Three below).

OPTION THREE

Through Compatibility View Settings

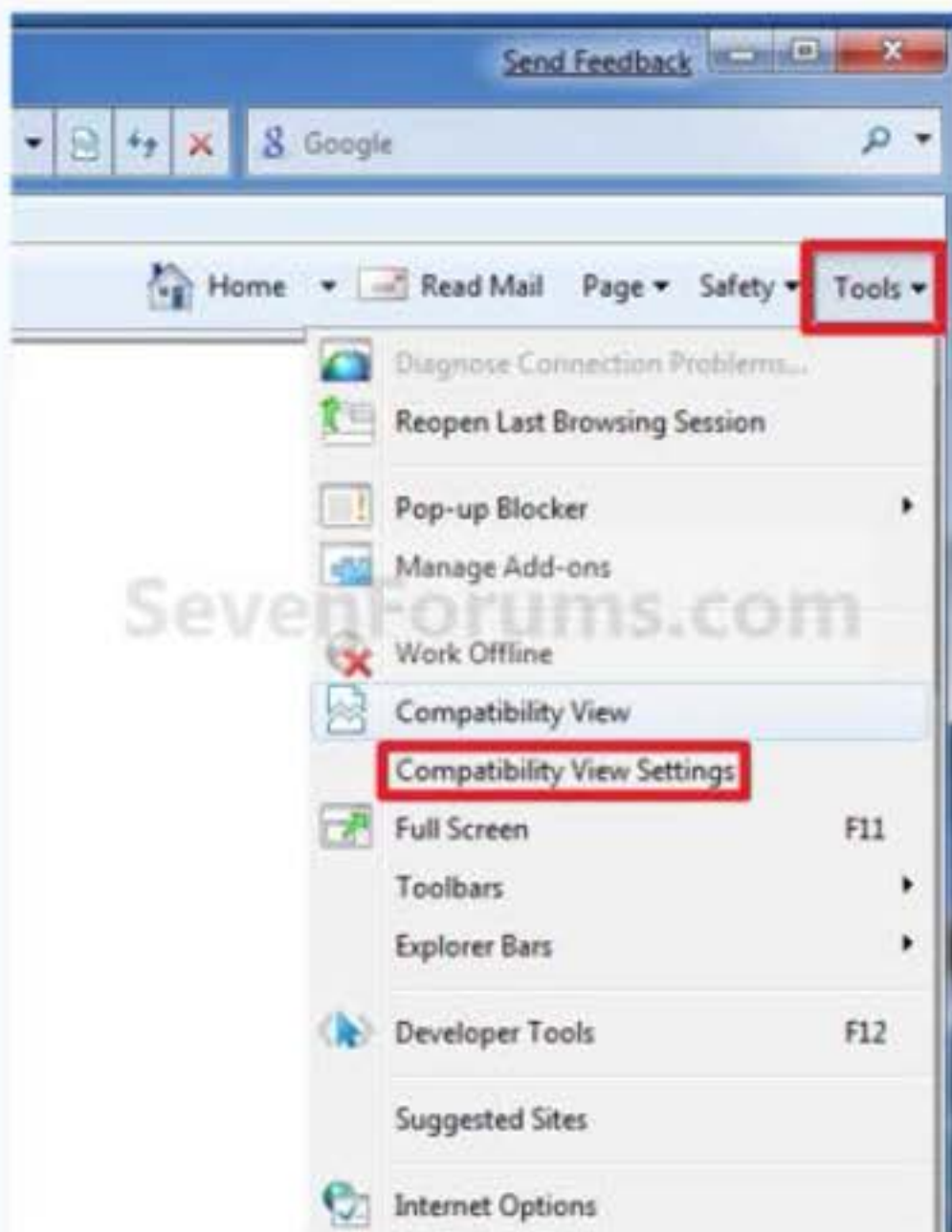
NOTE: This will let you turn on or off Compatibility View for a webpage by adding or removing the webpage address from the Compatibility View list.

1. Click/tap on the **Tools Menu Bar** (ALT+T) item, and go to **step 3** below. (See screenshot below)



OR

2. Click/tap on the **Tools Command Bar** button. (See screenshot below)

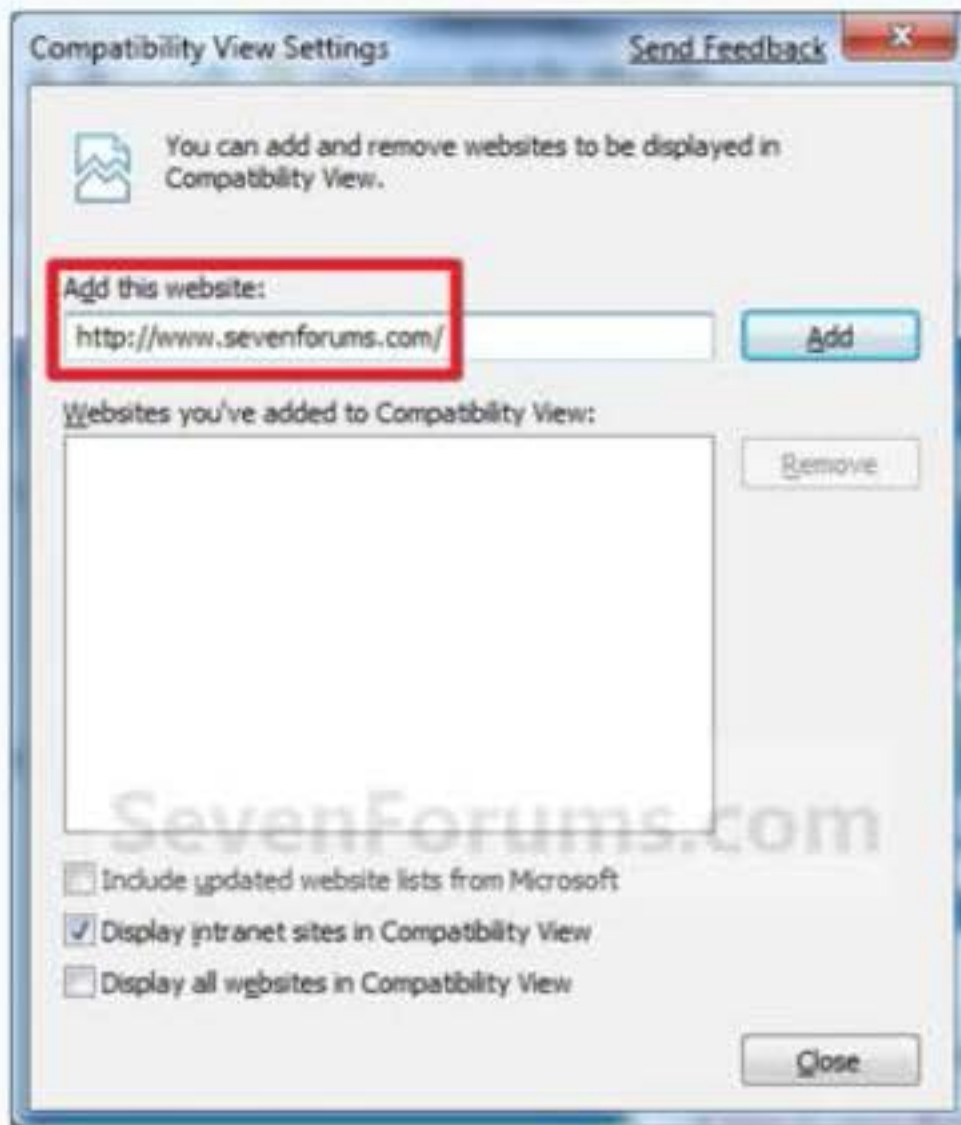


3. Click/tap on **Compatibility View Settings**. (See screenshots above)

4. To Add a Website to the Compatibility View List in Internet Explorer

A) Type in the webpage address that you want to turn on Compatibility View for, and click/tap on the **Add** button. (See screenshot below)

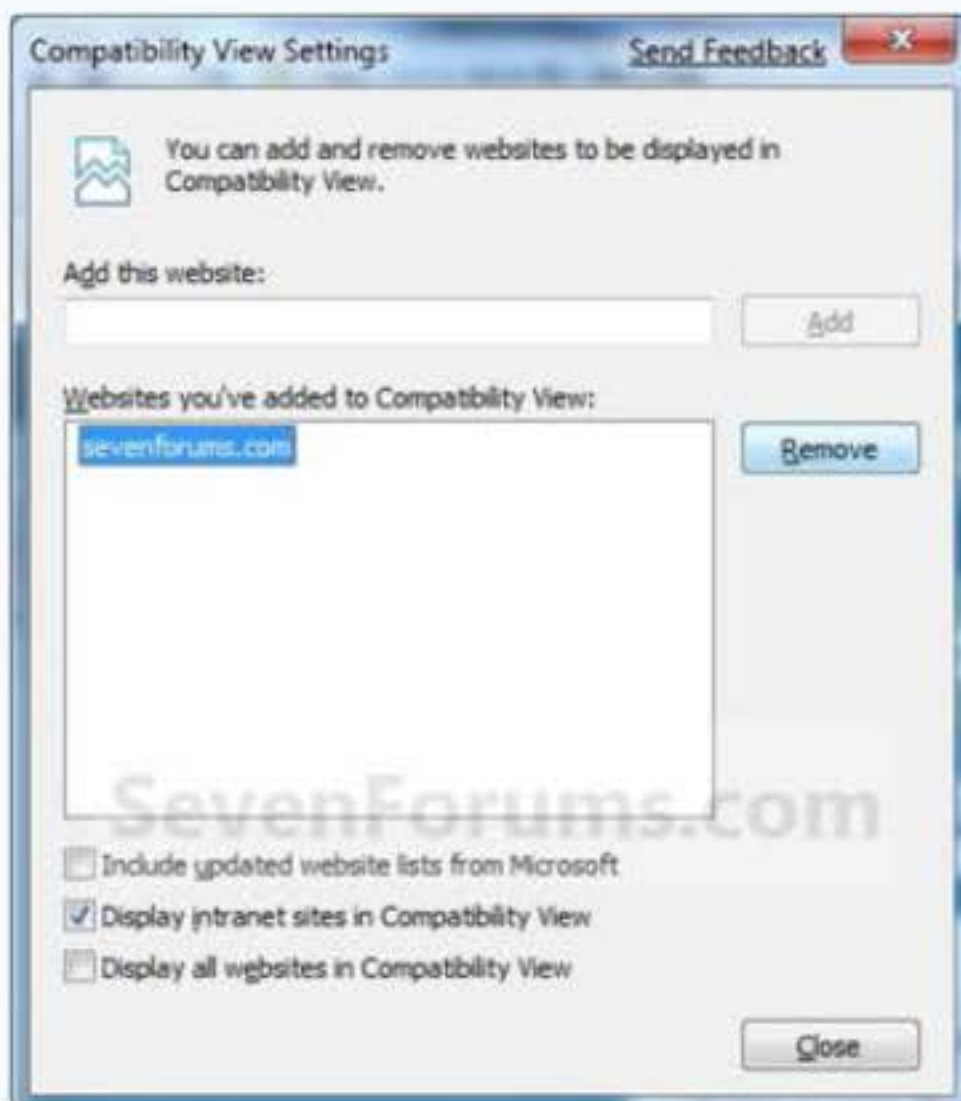
NOTE: The current webpage address will automatically be filled in for you. Just clear it if you want to add a different address instead.



B) Go to step 6.

5. To Remove a Website from the Compatibility View List in Internet Explorer

A) Select a listed webpage address that you want to turn off Compatibility View for, and click/tap on the **Remove** button. (See screenshot below)



6. Click/tap on the **Close** button. (See screenshots above)